



17



Crocus Creek & Bar



HOWARDS BOTTOM

434.8 - Crocus Creek & Bar - Channel LDB / GFA / GWA

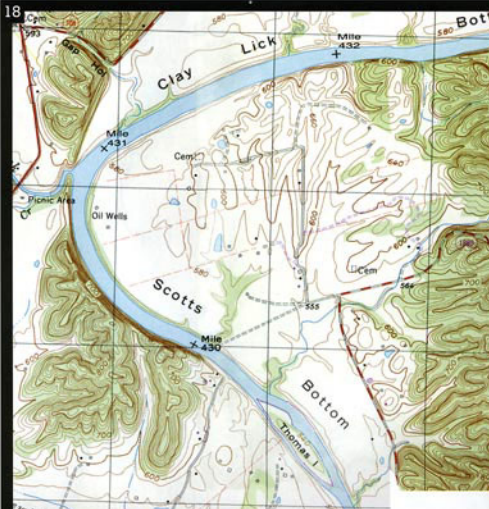
(Usually very busy with walk-in fishermen since there is road access. See picture inset that shows the bar that the map omits.)

CLAY LICK BOTTOM

433.5 - Bakerton Bar (Island) - Channel LDB / GFA / GWA / 6'

Red Tailed Hawk -

One of the Cumberland's frequent flyers.



18

SCOTTS BOTTOM

430.8 - Renox Creek & Bar - Channel LDB / GFA / GWA / 4'
(Watch your boat here, the channel is far to the left descending bank.)

429.5 - Thomas Island - Channel LDB / GFA / GWA / 10'

BE AWARE:

Your engine will consume **25 - 30% more fuel** when traveling upstream.



Thomas Island